

# GROUND CONTROL

COLLECTION 2022





G⚡C

THIS IS GROUND CONTROL

VISIONS RANGE

EARTHLING RANGE

SATELLITE RANGE

SHADOWS RANGE

TOUGHIES RANGE

PRINCIPLES

HOW WE WORK

FOUNDERS

PRICE LIST

CONTACT





This is

## GROUND ⚡ CONTROL

Ground Control is a new, ethical and fully customisable rug range. The collection embodies open air, sun drenched days, bare feet and timelessness, but with a spirited, fun edge.

Rich natural fibres and raw materials including jute, hemp, cotton and pure wool form the hand-loomed collection; many with a touch of gold and metallics.

Amigos de Hoy offers a free in-house design service, Room Service, where clients can see a render of their desired rug realistically placed into their room. Along with our Swatch Library service, clients are in control of their rug from design to delivery.

Ground Control is offered in standard sizes, but is also available to completely customise. Each rug is handmade to order with a lead time of around 6-8 weeks.

All Ground Control ranges are accredited by GoodWeave International, which gives customers peace of mind that no child forced labor was used in the making of the range. Purchasing certified GoodWeave rugs also supports programs that educate children and ensure fair work for adults.

The Australian coastal roots of sisters Bree and Kura has inspired Ground Control, along with a global demand for made-to-measure rug design and retreat style living.







---

The Visions collection combines delicate but bold graphic styles, with deluxe materials, to create rugs that take centre stage. Produced from luxury weaves, it plays with pattern and texture, to create a focal point in any area.





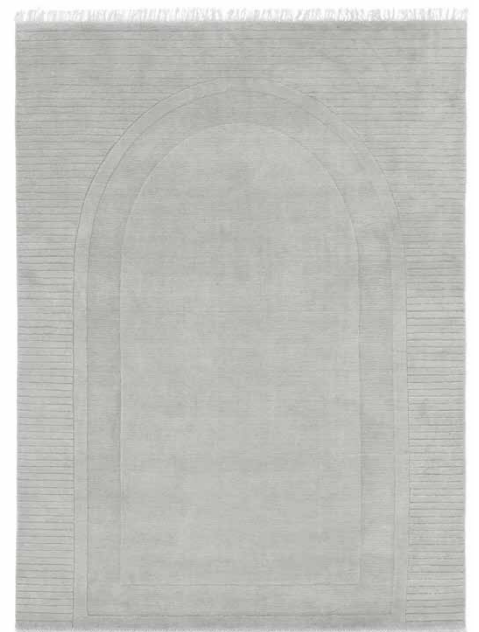
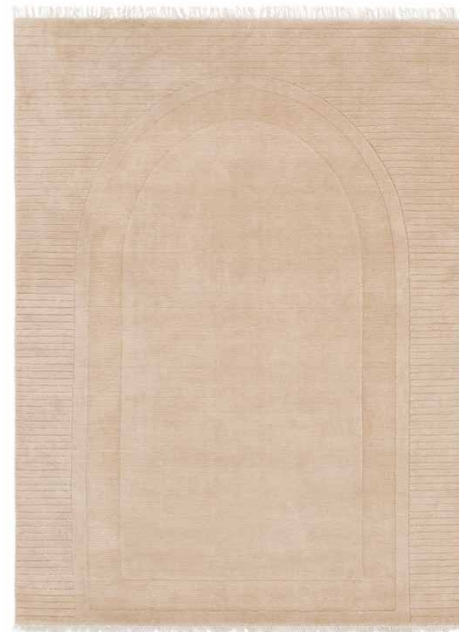


## ATHENA ARCH WEAVE

WOOL, COTTON

1.7 x 2.3 m / 2 x 3m / 3 x 4m / Bespoke

Available with / without fringe



BISCUIT



MOON

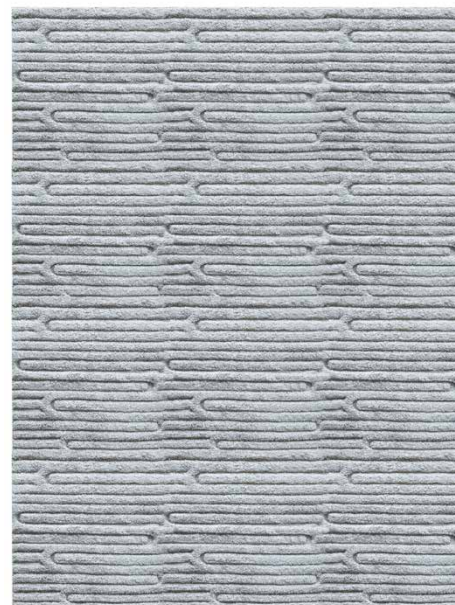




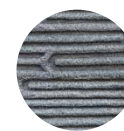
## LABYRINTH WEAVE

WOOL, RAYON, COTTON

1.65 x 2.3 m / 2 x 3m / 3 x 4m / Round, Runner & Bespoke



ASH



CINDER

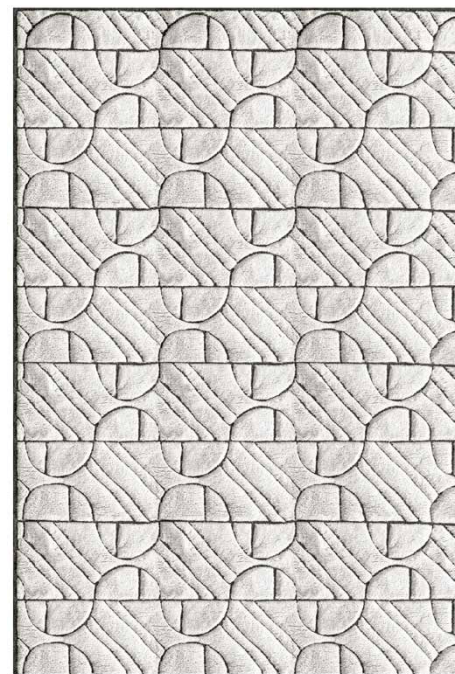




## JOURNEYS WEAVE

WOOL, COTTON

1.6 x 2.3 m / 2 x 3 m / 3 x 4 m / Round & Bespoke



CREAM/CHARCOAL





## HONEYCOMB WEAVE

WOOL, COTTON

1.6 x 2.3 m / 2 x 3 m / 3 x 4 m / Round & Bespoke



CREAM/CHARCOAL    PEWTER/CREAM

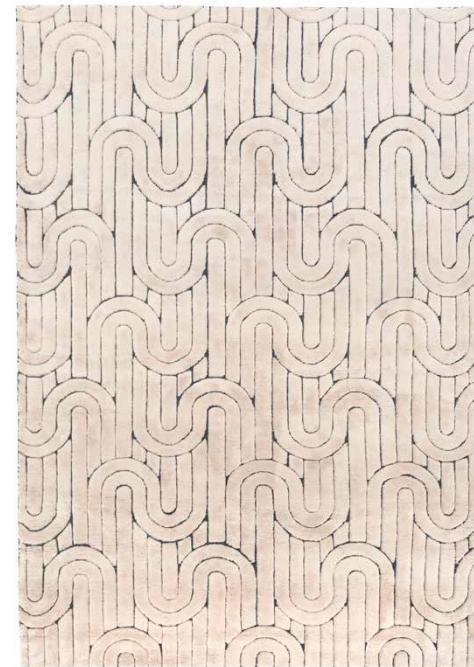




## REALITY WEAVE

WOOL, COTTON

1.6 x 2.3 m / 2 x 3m / 3 x 4m / Round & Bespoke



CREAM/CHARCOAL





## KINGDOM WEAVE

WOOL, RAYON, COTTON

1.65 x 2.3 m / 2 x 3m / 3 x 4m / Round & Bespoke



FLINT



CREAM





## SHAPES WEAVE

WOOL, RAYON, COTTON

1.65 x 2.3 m / 2 x 3m / 3 x 4m / Round & Bespoke



FLINT



CREAM





## STARDUST WEAVE

WOOL, COTTON

1.6 x 2.3 m / 2 x 3m / 3 x 4m / Round & Bespoke



CREAM



DOVE





## REBEL ETCH WEAVE

WOOL, COTTON

1.6 x 2.3 m / 2 x 3m / 3 x 4m / Round & Bespoke



GREY/CHARCOAL



CREAM/CHARCOAL





## VOYAGE WEAVE

WOOL, COTTON

1.6 x 2.3 m / 2 x 3m / 3 x 4m / Round & Bespoke



CREAM



DOVE



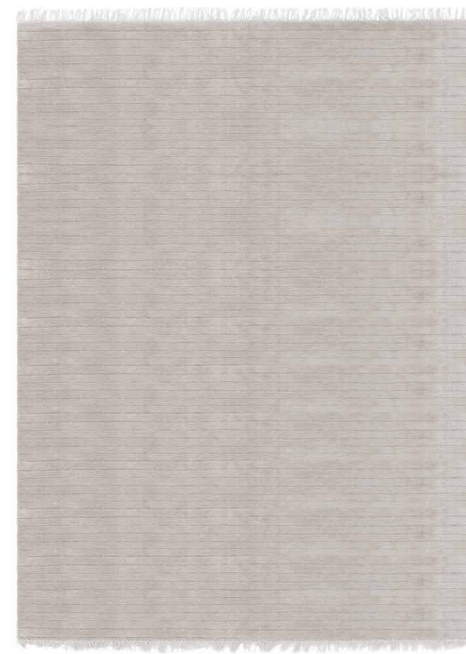
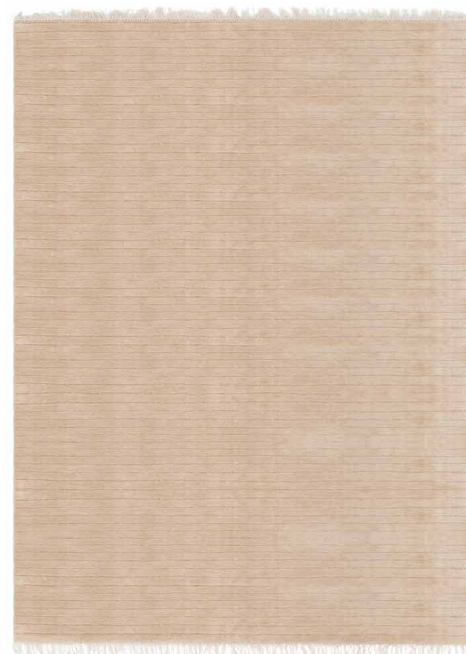


## TODAY WEAVE

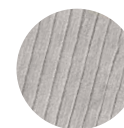
WOOL, COTTON

1.7 x 2.3 m / 2 x 3m / 3 x 4m / Bespoke

Available with / without fringe



BISCUIT



MOON

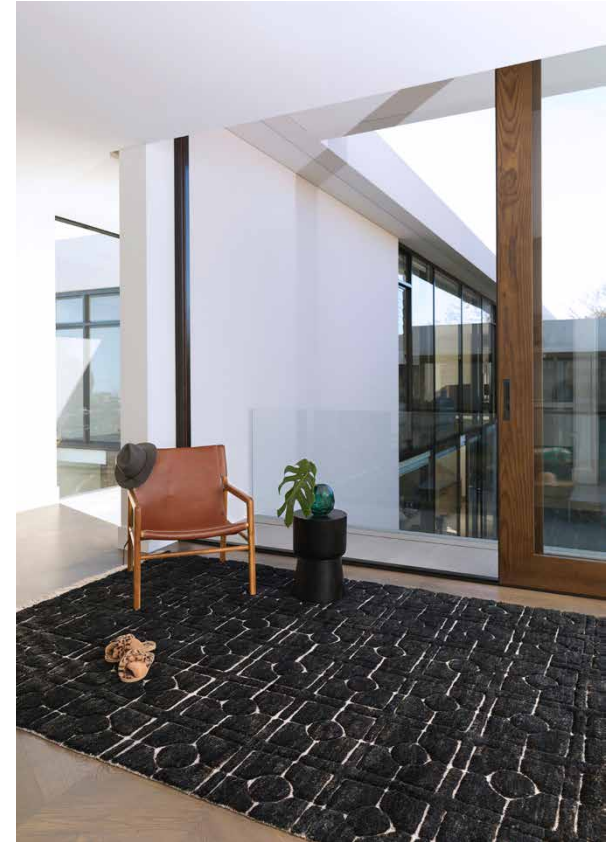






---

The Earthling collection features rustic earthy styles, loomed in raw natural fibres and hues. Its pieces are naturally poetic, and organic in essence, creating a harmony of texture and tone in your space.







## BREEZEBLOCK WEAVE

JUTE, COTTON

1.65 x 2.3 m / 2 x 3m / 3 x 4m / Runner & Bespoke

Available with / without fringe



STRAW



MIDNIGHT





## RICOCHET WEAVE

JUTE, COTTON

1.6 x 2.3 m / 2 x 3m / 3 x 4m / Runner & Bespoke



BLACK



WHITE





## RIVER WEAVE

HEMP, COTTON, LUREX

1.6 x 2.3 m / 2 x 3m / 3 x 4m / Runner & Bespoke

Available with / without fringe



BLACK



WHITE









## MARS WEAVE

JUTE, COTTON, WOOL, LUREX

1.6 x 2.3 m / 2 x 3m / 3 x 4m / Bespoke

Available with / without fringe



BLACK



WHITE









## DIAMONDS WEAVE

HEMP & WOOL

1.6 x 2.3 m / 2 x 3m / 3 x 4m / Runner & Bespoke

Available with / without fringe



WHITE



BLACK









---

The Satellite collection embodies simple forms and refined versatile styles in luxe hand woven neutrals. Its styles feature engaging, but balanced clean lines, in quality made to last materials.





## TRACE WEAVE

WOOL, COTTON

1.8 x 2.45 m / 2 x 3m / 3 x 4m / Round & Bespoke



DOVE/WHITE



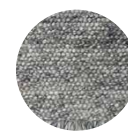


## KARMA WEAVE

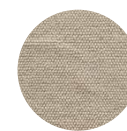
WOOL, COTTON

1.6 x 2.3 m / 2 x 3 m / 3 x 4 m / Round & Bespoke

Available with / without fringe



CHARCOAL



CREAM



SMOKE









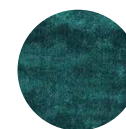
## PALLAS WEAVE

VISCOSE, COTTON

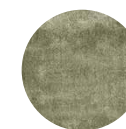
1.6 x 2.3 m / 2 x 3m / 3 x 4m / Round & Bespoke



DEEP BERRY



JUNGLE GREEN



SAGE



CORAL

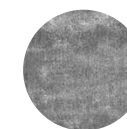
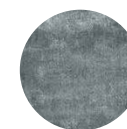
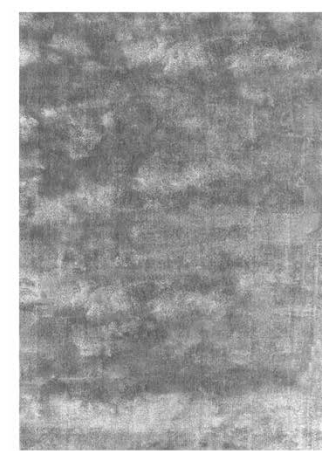




## PALLAS WEAVE

VISCOSE, COTTON

1.6 x 2.3 m / 2 x 3m / 3 x 4m / Round & Bespoke



GUNMETAL

COGNAC

FROST

PETROL

SILVERLAKE





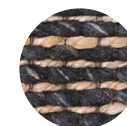
## GEMINI WEAVE

WOOL, COTTON

1.6 x 2.3 m / 2 x 3m / 3 x 4m / Runner & Bespoke



CREAM



BLACK





## CONVERSATION WEAVE

WOOL, COTTON

1.6 x 2.3 m / 2 x 3m / 3 x 4m / Bespoke



STONE











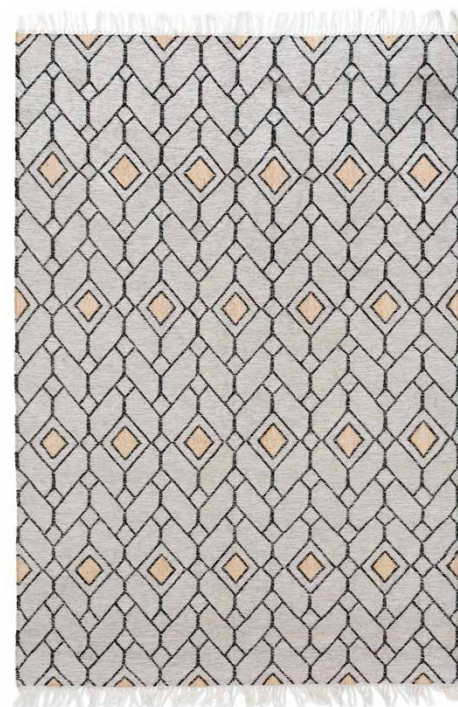


## ASHES WEAVE

RECYCLED PET

1.6 x 2.3 m / 2 x 3m / 3 x 4m / Runner & Bespoke

Available with / without fringe



GRAY/GOLD



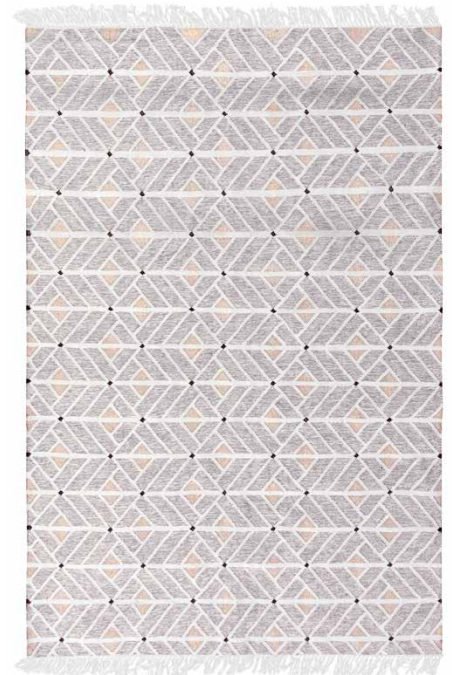


## HELDEN WEAVE

RECYCLED PET

1.6 x 2.3 m / 2 x 3m / 3 x 4m / Runner & Bespoke

Available with / without fringe



SAND



GRAY









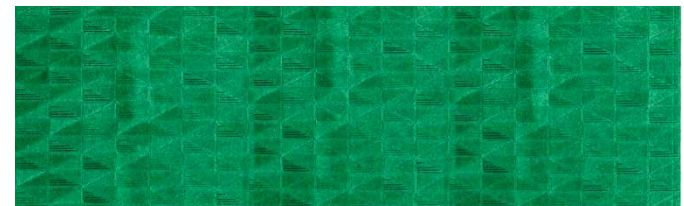
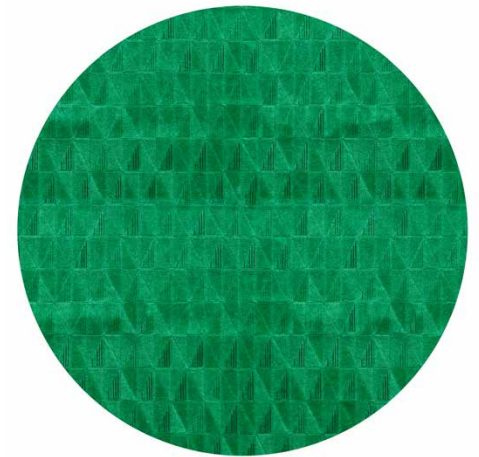
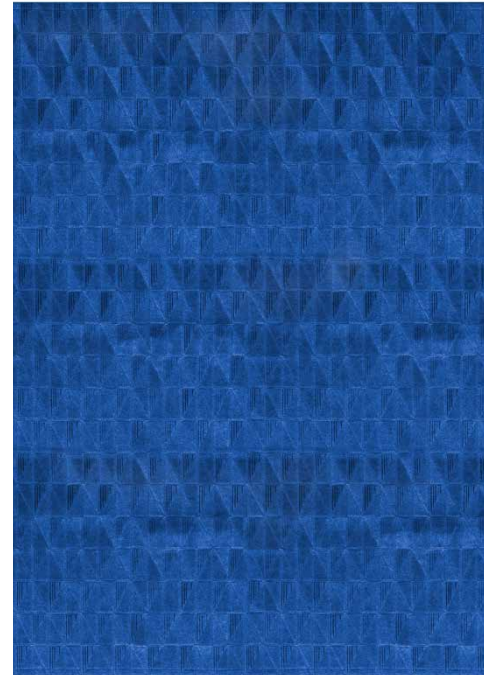




## FRAGMENT

NYLON, WOOL

Rectangle, Round, Runner & Bespoke



BLUE

GREEN

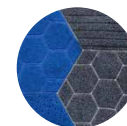




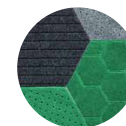
## THE HEX

NYLON, WOOL

Rectangle, Round, Runner & Bespoke



BLUE



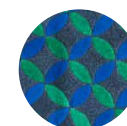
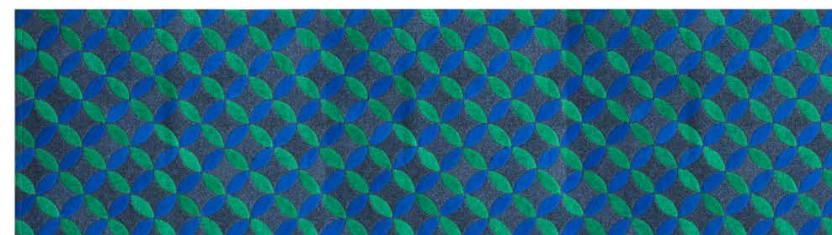
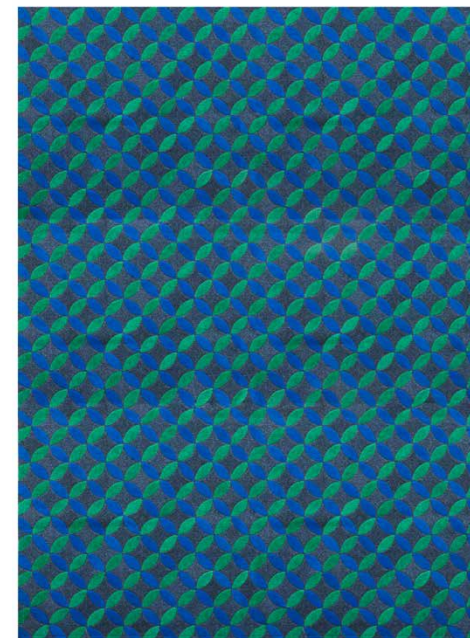
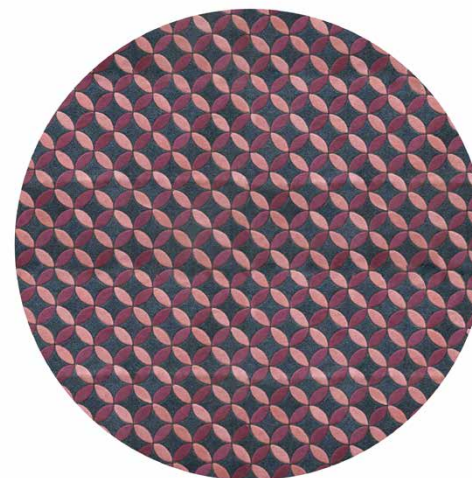
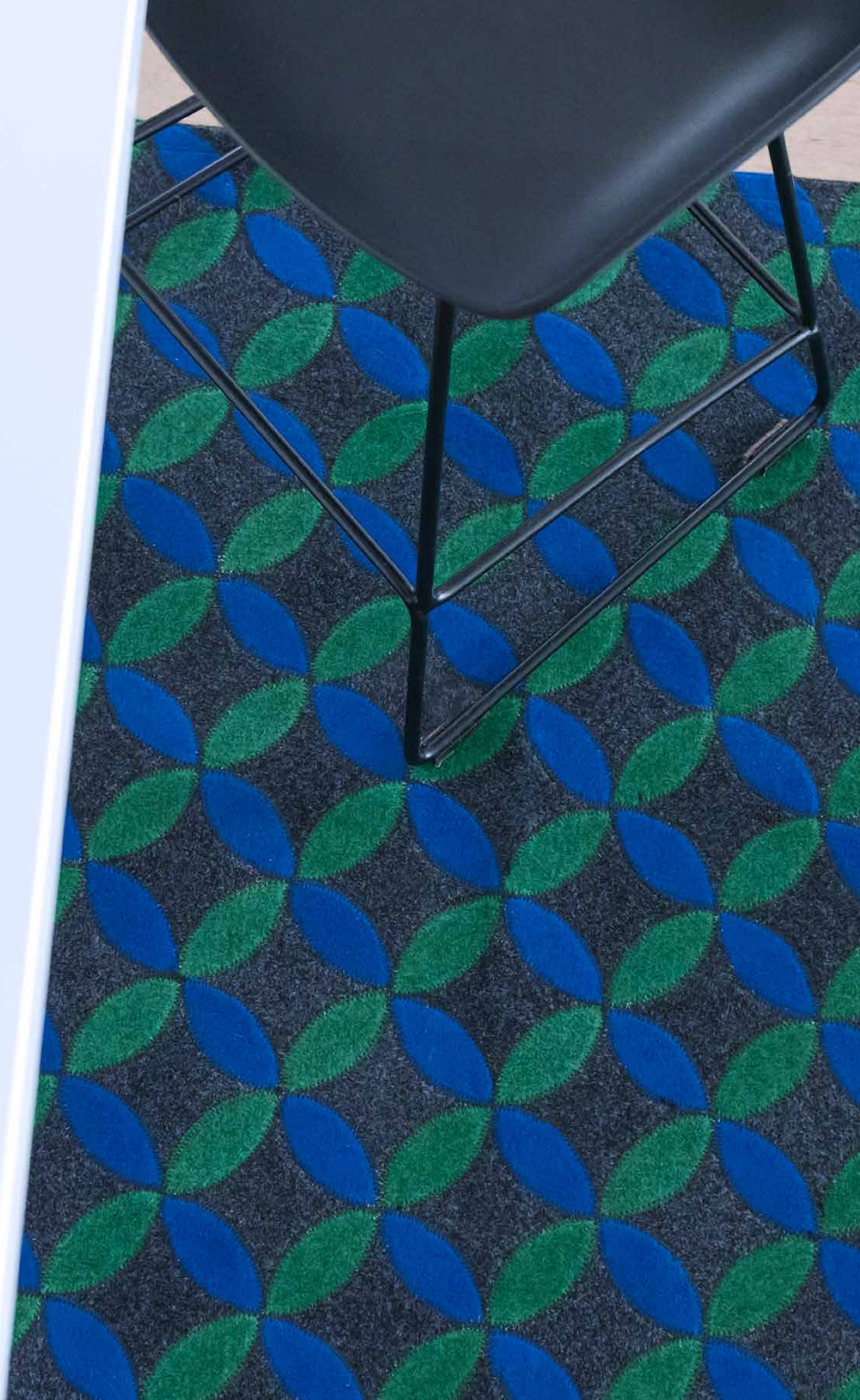
GREEN



# ALADDIN

NYLON, WOOL

Rectangle, Round, Runner & Bespoke



BLUE



PINK

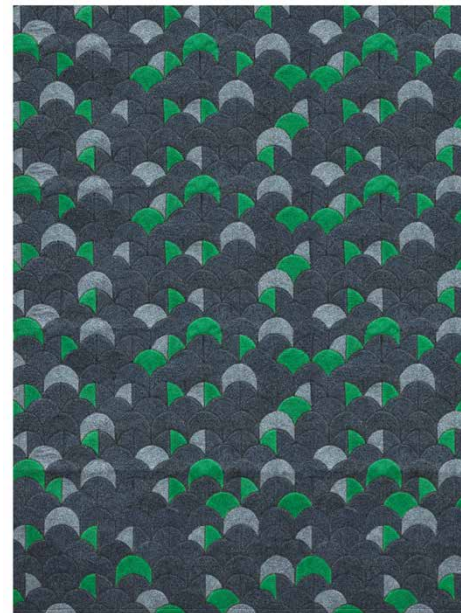




## COVE

NYLON, WOOL

Rectangle, Round, Runner & Bespoke



GREEN

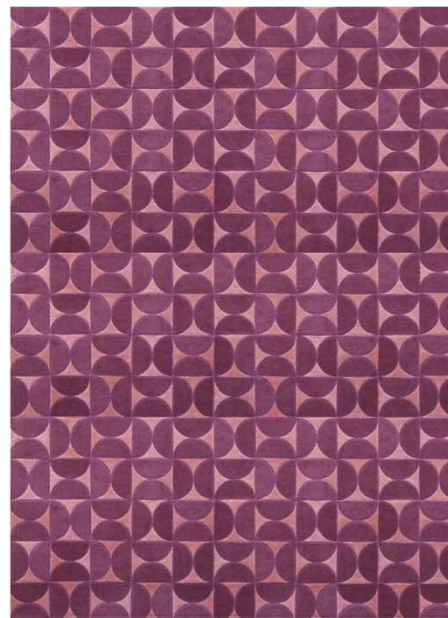




## HORIZONS

NYLON, WOOL

Rectangle, Round, Runner & Bespoke



PINK









## GOOD WEAVE CERTIFIED

The Ground Control range has a beautiful story. We believe in bringing visibility to hidden supply chains, giving a voice to vulnerable workers and restoring childhood. We've joined GoodWeave to #ChangeThePattern and give you our best assurance that all our rugs are made without child labor. Look for our rugs with the GoodWeave label and join us to #EndChildLabor and support education and learning programs for traditionally impoverished communities.

## HAND MADE

Ground Control rugs are all handmade with love and attention by our skilled weavers, in luxurious hand spun natural fibres. The hand weaving process creates subtle differences in each piece that are to be embraced, adding to each rug's uniqueness. The hand made process, with its natural texture, adds personality, tactility and character to a space.





## LEAD/PRODUCTION TIME

All Ground Control Rugs are masterfully hand loomed to order - Please allow 6-8 weeks for delivery. If you need a piece faster than this, please contact us and we will do our best to accomodate your timeline.

## SWATCH LIBRARY

Ground Control offers a full swatch service for all their rugs, for you to see first hand the quality of the range. You can order any swatches from the range at our

Digital Showroom

[www.ahgcshowroom.com.au](http://www.ahgcshowroom.com.au)

## ROOM SERVICE

Ground Control's manufacturing, technical and design expertise offers a reliable end-to-end service, from design conception to delivery. Our in-house design team can produce realistic digital insitu renders and style overheads, complemented by textile swatches of our full range.

See our video below about this free service :

<https://ahgcshowroom.com.au/pages/room-service>

## BESPOKE

A vast majority of our work is done in the bespoke/made to measure realm. While we have a ready made size range, we can also custom make any weave in your necessary size or colourway. We regularly work with designers and clients directly to create a piece custom made for specific spaces. If you can dream it, we can make it. We have free in house rendering to help visualise any designer adaptations of our range.

## CATALOGUES

Ground Control offer digitalized catalogues that are frequently updated with new collections and releases. You can view all our catalogues, specifying guides and more at our Digital Showroom here:

<https://ahgcshowroom.com.au/pages/catalogues>





Australian sisters, Kura Perkins and Bree Hay-Hendry, are the creative forces behind Australian brands gone-global, Art Hide and Amigos de Hoy, plus the new Ground Control Range.

With five young daughters between them, designing family-first, high design, yet durable products is at the heart of product design for both brands.

Working on opposite sides of Australia - Bree, a qualified textiles & fashion designer, in Sydney, and Kura, a former PR exec, in Perth - the girls have successfully expanded their lines, not only within Australia but in the USA, UK, China, UAE, New Zealand and Switzerland.

Kura and Bree are very hands on and value personalized experience. When you work with them, you'll likely have personal service from one or both of them!

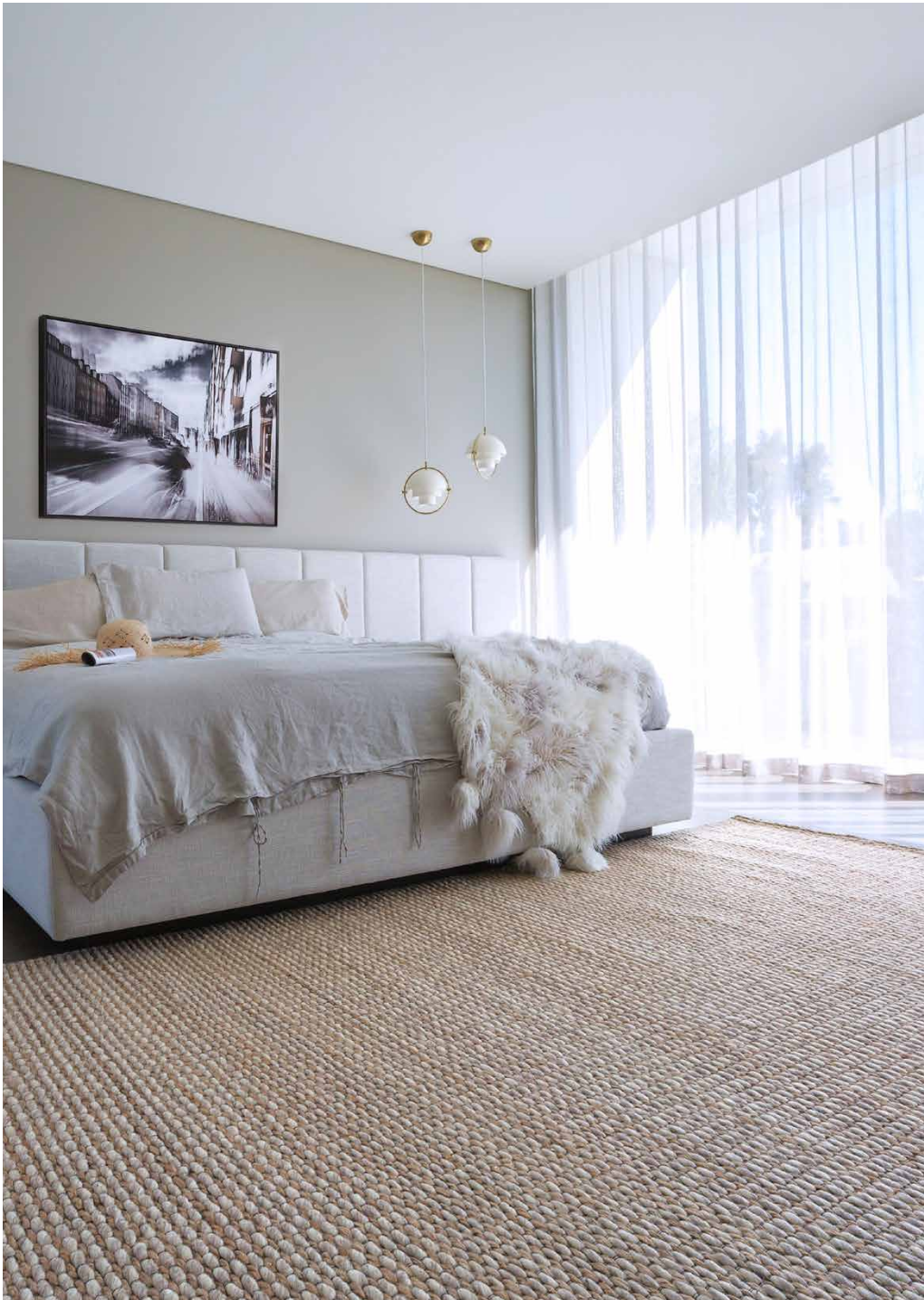




VISIT LINK BELOW FOR STANDARD SIZES & CURRENT PRICING

[VIEW HERE](#)





## EMAIL

[groundcontrol@amigosdehoy.com](mailto:groundcontrol@amigosdehoy.com)

## PHONE

(08) 9439 1990

## HEADQUARTERS

PERTH, NORTH CAROLINA

## FIND US

[www.groundcontrolrugs.com](http://www.groundcontrolrugs.com)  
[@groundcontrolbyadh](#)

## DIGITAL SHOWROOM

<https://ahgcshowroom.com.au/>